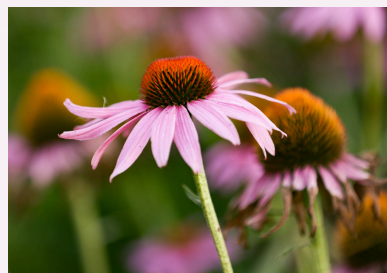


The Municipal Connection

Volume 18, Issue 3

The Fire Restriction was removed by motion of Council on May 21st. Issuance of permits has been resumed. More on page 3.



HAPPY RETIREMENT

After an outstanding 33 year career with the M.D. of Wainwright, Agricultural Fieldman James Schwindt retired on May 31st. James has contributed immensely to the Ag Service's Department, Alberta-wide network of Ag Fieldmen, and the M.D. as a whole over his years of service and will be greatly missed within the organization. From all the staff and Council at the M.D. of Wainwright, we wish James all the very best in his retirement! Congrats James!



Happy Retirement

THANK YOU FOR COMING OUT

The Agricultural Services Department would like to extend a thank you to everyone who attended workshops in the winter series! Six events took place beginning in February, with 304 attendees between them. We are fortunate to have had many wonderful presenters join us and would like to thank them for their contributions to these educational days. We look forward to seeing YOU out at future events!

COMMUNITY EVENTS

Wainwright District 4-H Achievement Show and Sale Wednesday, June 5th in Chauvin at the Community Center Arena
Irma 4-H Beef Club Show and Sale Monday, June 10 at the Irma Fair Grounds
Wainwright Stampede June 21 - 23
Edgerton Sports Days July 5 - 7
Irma Days, Irma Elks Gun and Antique Show, and the Irma Summerspiel August 3 - 5



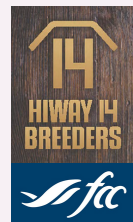
2024 BURSARIES

The **M.D. of Wainwright** offers two \$1,000 bursaries to rural students in pursuit of post secondary education! The ASB (Agricultural Service Board) Bursary is designed for students enrolled in an agriculture or environmental program, and the Education Bursary is open to students enrolled in any program at an accredited college, university or trade school. The application period is between July 1 and September 1 annually. Find applications online at mdwainwright.ca, stop in at the Admin building to pick them up, or email Shelby at soracheski@mdwainwright.ca

AAAF Memorial Bursary (Association of Alberta Agricultural Fieldman) is intended for students continuing their education at a College or University, enrolled in an agricultural or environmental science program. Two \$1000 bursaries are available to students that reside in the Northeast AAAF Region. Deadline for submission is September 1, annually. Download the application on the M.D. website.



The Hiway 14 Breeder's Co-op Ltd., in partnership with FCC, is pleased to announce the first annual **Travis Aykroyd Memorial Bursary**. This bursary will serve as a tribute to Travis by providing financial support to deserving students pursuing studies in agriculture. We hope to inspire future generations to carry forward his passion for agriculture and his spirit of determination. The \$2500.00 bursary is open to students who are enrolled in a post-secondary college, university or trade school in agriculture-related programs. Application forms are available from the Hiway 14 Breeder's Co-op office by email at hiway14breeders@gmail.com or by calling 780 842-4004. Application period is July 1 to August 31, 2024.



VEGETATION MANAGEMENT PROGRAM 2024

There are several reasons the M.D. undertakes a vegetation management program, some of which include:

Control of Invasive Species: the M.D. is legally bound to abide by the Alberta Weed Control Act which mandates that Regulated Weeds, which are categorized as Prohibited Noxious or Noxious, must be controlled in right of ways (ROWs). The Alberta Weed Control Regulation identifies these species.

Protection of Private Property and Agricultural Lands: roadways are a common pathway of spread for invasive species. Controlling weeds in ROWs decreases the risk of these species spreading into adjacent private land, such as crops and pastures.

Public Safety: overgrown vegetation reduces site lines on roadways, such as for visibility of wildlife and signage.

The Vegetation Management Program is coordinated in an integrated manner. Spraying and mowing are some of the tools used to achieve control of encroaching brush and invasive species. Weed control is completed proactively, which is more cost effective and provides long term results.

Spray Program: brush spraying is completed on a two year rotation, where all M.D. ROWs are spot sprayed once every two years for brush under 2m in height. Trees over 2m in height may be mulched by the Public Works Department. Weed control is completed on a three year rotation, where roadsides are blanket sprayed for prohibited noxious, noxious and general weeds once every three years. Spot spraying for regulated weeds is still completed annually in the areas that do not receive a blanket treatment. M.D. staff hold current pesticide applicator licenses through the Alberta Environmental Protection and Enhancement Act, which is the highest level of certification through the Alberta Government for the management and application of pesticides. The program utilizes selective herbicides according to label directions to ensure the health and safety of residents.

Landowners are encouraged to request assistance in identifying and controlling regulated weeds. Weed inspectors can visit your property, or are available by phone or email to aid in identification. If a Regulated Species is found, staff can assist with control (excluding Canada and sow thistle) at a cost of \$25.00 an hour plus the cost of chemical. M.D. staff can also work with you if you choose to administer control yourself.

Municipal Mowing Program: Over nine hundred miles of Municipal roadside is mowed annually through this program. Mowing is completed by contractors and will begin on or after July 15th

Municipal Roadside Seeding Program: the Agricultural Service Department works in conjunction with the Public Works Department on the reclamation of newly constructed Municipal ROWs and borrow pits. Landowners have the choice of what grass seed mixture they want their owned land reseeded to.

Be on the lookout for these invasive species, all found within the M.D. of Wainwright. Photos all taken in the M.D. of Wainwright by Shelby Oracheski. Top left to right: baby's breath, tall buttercup, nodding thistle, hoary alyssum, pale yellow iris, scentless chamomile. Bottom left to right: spotted knapweed, yellow toadflax, purple loosestrife, yellow clematis, common tansy.

MUNICIPAL WEED INSPECTORS

Dennis Fuder
780-842-7060
Divisions 1, 5, 6 and 7

Laine Maron
780-842-8579
Divisions 2, 3, 4 and 5

Shelby Oracheski
Agricultural Fieldman
soracheski@mdwainwright.ca
780-842-0212

RESOURCES

There are many excellent resources available to aid in identifying weed species, and learn about the most appropriate control mechanisms for them. The Alberta Invasive Species Council (AISC) has a wealth of information on their website abinvasives.ca and also developed the most recent edition of Invasive Plants of Alberta, a handy pocket guide that can be picked up for free at the M.D. office. There are also many helpful apps, such as PictureThis, that reliably identify plants at the touch of your fingertips.



A LIKELY SOURCE

Weed seeds commonly travel with bales. Especially if you have brought in feed from an unknown source, be sure to monitor your bale and feeding locations for anything new popping up.

2023 DIRECTOR OF DEVELOPMENT ANNUAL REPORT

Development permit applications saw a subtle decline throughout the Municipal District of Wainwright No. 61 (MD) for the 2023 year. The MD issued 35 permits in 2023 down from 44 permits in 2022. The dollar value of developments however, increased significantly at \$308,489,803 up from \$13,089,260 in 2022. The vast majority of this value is attributed to industrial development – more specifically Solar Energy. Comparatively, in the last 5 years, development permits have averaged 50 per year valuing \$22,602,829.

The 2023 development permits included 8 single family dwellings with garages, 3 substantial additions to existing dwellings, 2 manufactured homes and 10 shops/garages/barns. A total of 4 permits were issued for the Clear Lake area which included new cabins/dwellings and retaining walls/sheds. Three permits were issued for a 200 MWac Solar Power Plant. It is noted that these permits were all issued for the same project but issued to each independent landowner. Five additional permits were issued for other or accessory uses and included roof mounted solar panels, sea cans, a perimeter fence for the Wainwright Landfill and a 6-unit residential multiplex.

Applications for subdivisions declined from 13 in 2022 to 6 in 2023. Six subdivision approvals were issued in 2023 down from 15 in 2022.

After extensive public consultation and engagement, the Municipal District of Wainwright No. 61 adopted Municipal Development Plan No. 1694 and Land Use Bylaw No. 1695 on June 20, 2023.

It should be noted that development permits are not only required for construction, placement, replacement, repair, or addition to a building, but also for demolition. The change in use of land or buildings including changes in intensity of use of land or building also require a development permit. Development permits are required for excavation and stockpiles.

Clear Lake residents are reminded that any type of development, including grading of your lot, extensive landscaping, and retaining walls, require development permits and may entail an engineered design or geotechnical report. All shoreline modifications must be approved by Alberta Environment: Forestry and Parks.

If you have any questions regarding development, please contact Director of Development Services Dana Smith at dsmith@mdwainwright.ca or 780-842-4454. Development permit and subdivision applications can be picked up at the MD Administration office or downloaded from our website at www.mdwainwright.ca.

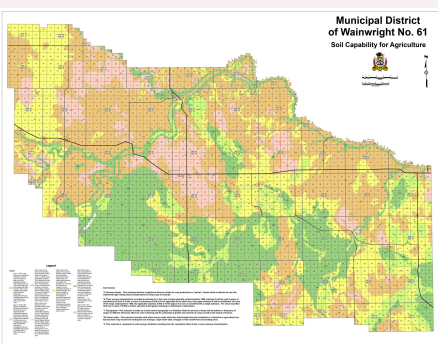


FIRE PERMITS

Fire permits are issued under the authority of the Forest and Prairie Protection Act, Regulators, and Municipal Bylaw 1396, and holders must comply with the conditions stated on the permit. Aside from fires lit for the purpose of cooking and warming (ie: a camp fire), permits are required for controlled burning of brush piles, lumber, yard cleanup materials, demolished building, etc. The M.D. of Wainwright has a no stubble burning bylaw, therefore no stubble, straw, or bales may be burned unless a special permit is issued by the Agricultural Fieldman. Standing buildings may only be burnt by special permit as well, which may only be issued by a Fire Chief. No permit authorizes the burning of prohibited debris, as defined by the Act, such as petroleum products. Fire permits can be obtained for free at the M.D. Admin building, through the area Fire Chiefs, and some Municipal Councilors and are valid for a period of two weeks.

NOTICE: 2024 PROPERTY INSPECTIONS

This notice is to inform MD of Wainwright ratepayers that inspections of properties for assessment purposes will take place in the months of June / July. About 20% of properties are inspected each year – 2024 Inspections will cover Ranges 8, 9 and 10, plus areas where permits or progressive assessments have taken place or are ongoing. Inspections will be done by Wainwright Assessment Group Ltd. Assessors will be on site and show I.D when occupants are present and leave notes in doors and proceed to do exterior inspections when no one is at the property.



SOIL CAPABILITY MAPS

Soil capability maps for the M.D. can be found on the website at mdwainwright.ca under the ASB section or 30"x42" paper copies can be printed for \$25 per map at the administration office. Call 780-842-4454 to request a printed map.

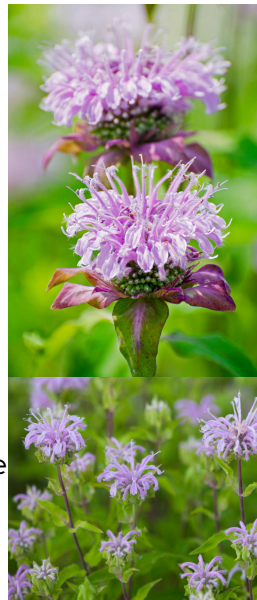


PODCAST FAN?

Featuring insightful opinions, the latest news from around the Angus cattle world and conversations with industry leaders, newsmakers and breeders – from the well-known to the not so well-known.

PRAIRIE STAPLES Wild Bergamot *Monarda fistulosa*

Wild bergamot, also known as 'horsemint' or 'beebalm', is a native species of the Mint Family. Like other members of this family, wild bergamot possesses the characteristic square stem that is immediately evident when rolled between the fingers. This species inhabits a wide range and grows on the open prairie, well suited to full sun. This herbaceous perennial produces stunning clusters of pink or purple flowers that are uniquely beautiful and add to the charm of the prairie landscape. Along with the stem and leaves, the entire plant produces a strong and pleasant citrusy aroma. Due to this scent, it was named after the oranges (*Citrus bergamia*) grown in Bergamo, Italy. As drinkers of Earl Grey Tea are familiar with, the popular tea is flavored with oil of bergamot. However it is not actually the prairie staple that is used in the tea, the flavoring comes from oranges. The showy blooms are of high value to local wildlife and especially to native pollinators, including bees, as the long tubular flowers are especially abundant in nectar.



In addition to its wildlife benefits, wild bergamot has several uses. The aromatic leaves of the plant can be used to make a refreshing mint tea and it was used medicinally in the past, too. Native people drank bergamot tea for stomach aches, boiled leaves were used to treat acne, and fresh crushed leaves were applied to soothe insect bites.



CROP PEST MONITORING

Monitoring for diamondback moths is currently underway using pheromone traps. Bertha Armyworm and Swede Midge trapping will begin in canola fields in early June at three locations across the M.D.

Clean + Drain + Dry all boats and equipment to help reduce the spread of invasive plants and organisms to Alberta waters.

Boats, other watercraft and associated equipment are often vectors in introducing invasive species into the province's lakes, streams and wetlands. Aquatic invasive species, such as zebra or quagga mussels and even aquatic plants, can be spread from one waterbody to another via boats, other watercraft or associated equipment that has not been properly cleaned, drained and dried between uses.



An ounce of prevention is worth a pound of cure, especially when it comes to aggressive invasive species. We can all do our part to ensure our water bodies can remain in prime condition for generations to come.

LOCAL RECREATION AREAS

There are several recreation areas in the M.D. of Wainwright. Aside from Riverdale and Arm Lake, the M.D. also manages small campgrounds at Ambler's Lake, Fabyan, Ribstone, and Salt Lake. Also within our Municipal borders is Dillberry Lake Provincial Park. Head over to mdwainwright.ca under the 'Parks & Attractions' tab to learn about each of these parks!

RURAL ROUTES Friday, August 16th, 2024

Held at the Elks Hall in Wainwright, you won't want to miss out on this evening of great food, company and entertainment! Keep an eye out for registration information coming this summer.

*this event is offered free of charge for M.D. of Wainwright ratepayers

This year's entertainer is comedian Myles Morrison! Myles has appeared at Just For Laughs, been featured on Amazon Prime's stand up series Comedy Brew, and appeared on CBC's The Debaters & CBC's Laugh Out Loud, to name only a few of his accomplishments!

SPRING RAT INSPECTIONS

Inspections of premises within Range 1 of the M.D. of Wainwright have been completed with no positive locations identified.

No matter where you are within the M.D., if you suspect you have a rat or have questions about the program, please do not hesitate to get in contact!

FACTS ABOUT ALBERTA

- On Sept. 1, 1905, Alberta became a province. The inauguration was hosted in Edmonton, where approximately 20,000 people attended - an astounding number, since the last census counted the population of the city at 4,176!
- Devil's Coulee was the first dinosaur nesting site discovered in Canada.
- On May 14, 1914, Alberta's first major oil and gas discovery took place in Turner Valley. The Turner Valley Gas Plant is now a national and provincial historic site, sharing this moment in Alberta's history with the world.
- Dr. Karl Clark was the first person to extract oil from bituminous sand deposits near Fort McMurray in 1929.
- Bertie Beaver has been the symbol for wildfire prevention in Alberta since 1958. The idea for Bertie was born after forestry staff and film crews from Walt Disney Studios worked together on a number of wildfire film documentaries in Kananaskis as part of Disney's True Life Adventure Series. Walt Disney had his illustrators design Bertie's image for fire poster designs.
- Wood Buffalo National Park features the largest beaver dam in the world. It's so large that it's visible from space!