

August 2019

Municipal District of Wainwright No.61

Volume 13, Issue 5

# The Municipal Agricultural Connection



Alberta Agriculture and Forestry

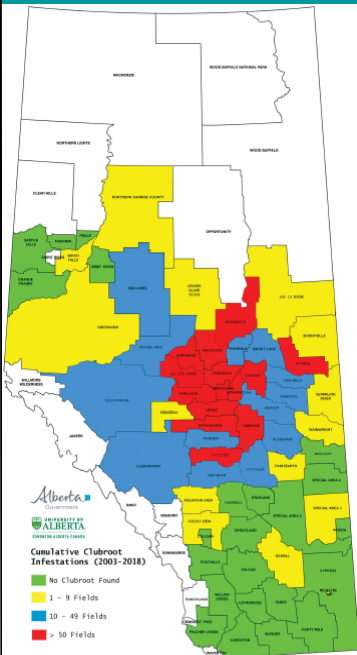
Partners in Rural Conservation  
www.mdwainwright.ca



Have an interesting topic you want discussed in the Newsletter or municipal meeting? Send suggestions to Asst. Agricultural Fieldman Tanis Ponath, [asb@mdwainwright.ca](mailto:asb@mdwainwright.ca) or call 780-842-4454

## Staying Vigilant about Clubroot!

It is that time of year to start scouting your fields for clubroot. In 2018, there was no new known cases of clubroot discovered in the M.D. of Wainwright. However, with our recent moisture there is potential to come across the disease. To the left, is an image of the 2018 Alberta wide clubroot distribution and the range of infestations found in each municipality.



Clubroot is a serious soil-borne disease of canola, mustard and other crops in the cabbage family. Plants affected by clubroot will exhibit club-like structures on its roots. The disease inhibits the plants from performing functions such as moving water and nutrients to plant parts. Overall, symptoms will vary depending on the growth stage of the crop when infection occurs. Plants infected at the seedling stage can show symptoms such as wilting, stunting, yellowing by the late rosette to early podding stage, while premature ripening or death can be observed in plants nearing maturity. Plants infected at later growth stages may not show wilting, stunting, or yellowing but may still ripen prematurely and the seeds may shrivel therefore, reducing yield and quality. Clubroot symptoms can also look like drought, nutrient deficiencies or other diseases. To distinguish between diseases, inspect the roots, the club-like structures are unique to clubroot. Hybridization nodules can occasionally be seen on canola roots and can be confused with clubroot galls. These nodules are more spherical and firmer than clubroot galls and do not decay when mature compared to clubroot galls.

Exposure to phenoxy herbicides can also result in swelling on lower stems and roots of canola. However, these malformations usually lack the large size and lobed appearance of clubroot calls.

Clubroot was first reported on broccoli, cabbage and cauliflower in gardens in the Edmonton area in the 1970's. The first economically important infestation in Alberta was on Chinese cabbage in a market garden in Edmonton in 2001. The first detected canola field was in Sturgeon County, northwest of Edmonton in 2003. It is still unknown where the original clubroot source came from. It may have been accidentally introduced by early settlers who may have brought infected vegetable with them from areas already infected.

Clubroot is transferred from field to field through soil that is infested with resting spores. Soil can spread through farm machinery, wind and water erosion, dust or earth tag from clubroot infested fields. Clubroot was declared a pest on *Alberta's Agricultural Pests Act* in 2007. The M.D. of Wainwright will once again be completing our annual clubroot survey throughout the municipality. Approximately 2 fields per township are randomly selected and plants are surveyed at the field entrance.

If you have any questions regarding clubroot you can contact Agricultural Fieldman James Schwindt or Assistant Agricultural Fieldman, Tanis Ponath at 780-842-4454.

## Canadian Agriculture Partnership Update

The Canadian Agriculture Partnership (CAP) is changing. You will notice that 11 programs offered through CAP are closed. These programs are going through changes as the first step towards making cost shares more balanced and to ensure programs are industry driven. The program terms and conditions will also be reviewed and updated. Programs are targeted to re-open by the end of summer if they are not already fully allocated. If you would like to receive an email notification you can subscribe to program announcements at [www.cap.alberta.ca](http://www.cap.alberta.ca). Applications that have been received to date (July 12, 2019) will not have to be resubmitted but will have to comply with the new terms and conditions. These applicants will receive direct communication from the program area that their application was received once the programs are re-opened.

Although the Farm Water Supply Program is not currently accepting applications, they are still accepting and approving the Long Term Water Management Plans (LTWMP). If you want to be eligible for activities under the Farm Water Supply Program you must have a completed LTWMP and it must be approved by an Alberta Agriculture and Forestry Water Specialist before starting the project and occurring any expenses. Eligible activities that are constructed during the program review period may still be eligible for funding when the program opens but they must be already identified in your approved LTWMP. If you are interested in the Farm Water Supply Program, you can contact Alberta Agriculture and Forestry Water Specialist, Melissa Orr-Langer at 780-422-1791 or [Melissa.orr-langer@gov.ab.ca](mailto:Melissa.orr-langer@gov.ab.ca).

Stay tuned for details on the M.D. of Wainwrights webpage, Facebook page and newsletter.

Stay tuned for details on the CleanFarms Unwanted Pesticides and Livestock Medication collection 2019. The collection dates are October 7-11, 2019. More details on pick-up locations and times will be announced.

### The Municipal District of Wainwright Presents.....

# 2019 Calendar Contest



*Send us your photos that capture the diversity of our agriculture industry and the environment within the M.D. of Wainwright.*

#### Contest Information:

- Applications can be downloaded from the M.D. website or picked up at the office
- Please no emails! Hard copies of pictures or USB stick only
- Photos must be taken within the M.D. of Wainwright & you must be an M.D. ratepayer
- You can mail in entries or drop them off at the office
- Send us photos that showcase all seasons

• **Deadline August 16, 2019**

**If you have any questions please contact Asst. Agricultural Fieldman Tanis Ponath at 780-842-4454**

### Here are some of last years winners:



Rachel Lawson "Peek-a-Boo"



Jen Koss "Tranquility"



Sheri White "Winter Sunset"

# ASB Update

Our weed inspectors are very busy inspecting roadsides for prohibited noxious and noxious weeds and spraying. If you come across a suspicious plant, either on our roadsides or in your field, stop into the main office and either Tanis or James can identify it for you. We encourage you to report any weed sightings to Tanis, James, or one of our weed inspectors.

Division 1&2: Ray Enstrom: 780-842-8461

Division 3,4 & 5: Laine Maron: 780-842-8579

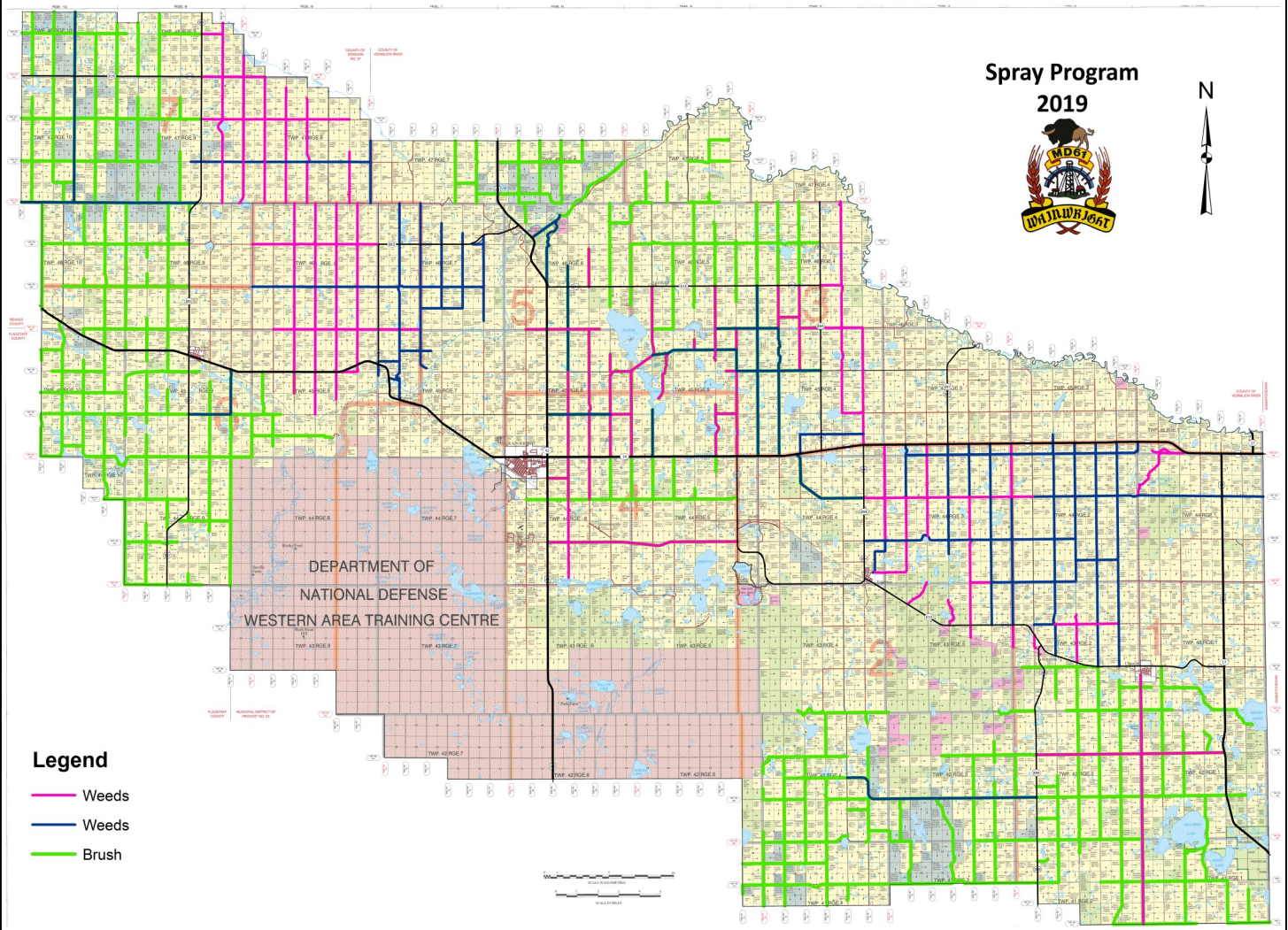
Division 5, 6 & 7: Dennis Fuder: 780-842-7060

We have seen an increase in scentless chamomile this year. Keep an eye out for this noxious weed on roadsides, headlands and hayfields. Scentless chamomile can be sprayed until flower. Once the plant has flowered, hand picking is the only control option.

Roadside mowing has started. We would like to remind producers that our contracted mowers will honour the existing swath and **if there is no existing swath, the ditch will be mowed.** Designated roads to be mowed have already been pre-determined. Not all M.D. roads are mowed. If you have any questions or concerns please contact the office.

Diamond back moth and bertha army worm traps showed low numbers so far this year and the swede midge survey results will not be available till they come back from the lab this fall. Wheat midge will be surveyed in the fall after harvest. Grasshopper surveys will begin in August followed by clubroot surveys.

## **Below is a map of the 2019 M.D. designated roads for weed and brush control.**



# Grasshoppers

Grasshopper forecasts are based on the previous year adult grasshopper counts conducted in early August. The adult grasshopper counts give an indication of the number of individuals that are capable of reproduction and egg laying. However, depending on the environmental conditions it can result in higher or lower populations than forecasted. Producers need to be aware of the of the potential risks in their area and monitor fields accordingly to determine if control measures are necessary. Grasshoppers lay their eggs near areas of green growth in the fall that will provide a potential food source for young in the spring. Pay close attention to field margins, fence lines and roadsides.



**Clear Winged Grasshopper**



**Two Stripe Grasshopper**



**Packard's Grasshopper**



**Bruners Grasshopper**



**Red Legged Grasshopper**



**Lesser Migratory Grasshopper**

*(Images courtesy of Shelley Barkley, Dan Johnson and Insects of Alberta)*

## Unacceptable Waste For A Front Load Bin

- ◆ No appliances or furniture
- ◆ Hazardous materials or any container having contained such material
- ◆ Free liquids, oily wastes, oil filters, oily rags, sludge's and semi-solids
- ◆ Solvents, greases, empty containers
- ◆ Paint, thinner or remover cans (unless RCRA empty, solidified or triple rinsed)
- ◆ Treated wood, railroad ties, industrial waste
- ◆ **Animal wastes and / or carcasses**
- ◆ Drums / containers (sealed)
- ◆ Burned debris
- ◆ Compressed cylinders (propane, oxygen etc.)
- ◆ Batteries, transformer, ballasts
- ◆ Household chemicals
- ◆ Herbicides and pesticide containers
- ◆ Hydrocarbon soils
- ◆ Asbestos
- ◆ Biomedical waste
- ◆ Fluorescent tubes
- ◆ Radioactive materials, naturally occurring (NORM)

**If you have any questions or concerns about acceptable waste contact the Wainwright Waste to Energy Facility at 780-842-4051.**

## Changes to Ropin' the Web

Have you been having problems accessing and finding information on the Alberta Government website? You may have noticed that Ropin' the Web is no longer available and the information from the website will now be available on the new Government website [www.alberta.ca](http://www.alberta.ca). The website is still undergoing changes and you may find navigation difficult.

Tips for finding resources on Alberta.ca

- ◆ [www.agriculture.alberta.ca](http://www.agriculture.alberta.ca) is now the Alberta Agriculture and Forestry ministry page. Here on the main page you can find links for Agri-News and Call of the Land under "News for Producers". Information regarding the Canadian Agriculture Partnership and Alberta Climate Information Services are also available. There is also links for Calendar of Events and Staff Directory.
- ◆ Currently tools and calculators can be found at [www.agric.gov.ab.ca/app21/Idcalc](http://www.agric.gov.ab.ca/app21/Idcalc)
- ◆ Open Government (<http://open.alberta.ca/publications>) has free publications and factsheets from all ministries. Select "agriculture" before you search to minimize items that will appear.
- ◆ Mobile apps such as ManureTracker and Call of the Land are located at [https://open.alberta.ca/blog/?page\\_id=115](https://open.alberta.ca/blog/?page_id=115)