

February 2018

Volume 12, Issue 1

Alberta Agriculture and Forestry

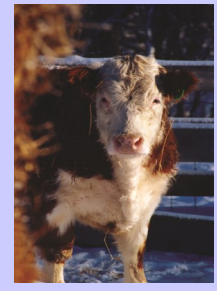


Partners in Rural Conservation
www.mdwainwright.ca

Have an interesting topic you want discussed in the Newsletter or municipal meeting? Send suggestions to Asst. Agricultural Fieldman Tanis Ponath, asb@mdwainwright.ca or 842-4454

Municipal District of Wainwright No.61

The Municipal Agricultural Connection



The Future of EFP is Online

On October 2nd, 2017 the Environmental Farm Plan (EFP) launched self-registration for producers. The self-registration page provides an efficient and user-friendly way for producers to register to start an EFP and be assigned to a technician in their region.

The benefits to producers of doing an EFP online are:

- Reduces Renewal Time: When it is time to update your EFP, the producer can easily access their previous work book and only update the sections of the farm that have changed.
- Automatic Risk Rating Calculations: It can be time consuming to calculate risk ratings in the binder version. The online work book will calculate these automatically.
- Automatic Submission: Easily submit an EFP to the assigned technician.
- Most Up to Date Version: The online work book always provides the most current content, information and best management practices.
- Online Resources: Useful information and resources are just a click away to help the producer make improvements to their farm.
- View Changes Anytime: The producer can log into the WebBook anytime to view any changes or updates to EFP's. This will provide the opportunity to keep the information about the sustainability of operations current.

Alberta EFP is also instituting a renewal period. EFP's that are ten years or older will need to be renewed. →

Thinking of planting trees this spring?? Stop by the M.D. office today to pick up a Shelterbelt Tree Package. Packages provide a wide range of information from tree nursery brochures and order forms to planting techniques and weed control. If you require the M.D. of Wainwright tree planter call 780-842-4454 to reserve today!!

Attention Farmers:

Alberta Environmental Farm Plan Renewal

Effective April 1, 2018

- Producers who have an EFP **older** than **10 years** will have to renew their EFP to eligible for new funding under the **Canadian Agricultural Partnership Program (CAP)**
- It is **strongly** recommended that producers complete the renewal online to make future renewals easier,

FAQ's

Why is Alberta EFP instituting a renewal period?

1. Alberta is the only province that does not have a renewal period. EFP is harmonizing nationally and they expect all provinces will harmonize the renewal period
2. EFP's are part of sustainable sourcing programs in Canada (potato sustainability initiative, proAction, VBP). Alberta EFP is anticipating more initiatives will use EFP as the Environmental backbone of their sustainable sourcing initiative.

Who decided the renewal period would be instituted?

Alberta EFP Stakeholder Advisory Committee approved the renewal period

What does this mean to me?

For producers if you to apply for CAP grants you will need to have a current EFP.

Beat the rush by renewing before CAP funding becomes available!!!

Who Can I Contact?

Tanis Ponath, Assistant Agricultural Fieldman & EFP Technician, 780-842-4454



FUSARIUM Update

At the beginning of 2011, the previous Assistant Agricultural Fieldman, Aimee Leggett wrote an article urging producers to stay vigilant and not to assume Fusarium won't come to the M.D. of Wainwright. At that time we assumed Fusarium was a southern Alberta irrigation problem and it would never move this far north. Fast forward a couple of years and M.D. of Wainwright producers are actively managing for Fusarium.

Once the Fusarium pathogen has established in the soil, there is little producers can do to eliminate the risk. Whether or not Fusarium is a problem for producers is largely dependent on environmental conditions. How a producer manages its agronomics will be the deciding factor on how the crop fares against Fusarium.

The concern is that Fusarium produces the mycotoxin deoxynivalenol (DON) which lowers the grade affecting the feed, malting and biofuel industries. Spores can over winter in the soil and on crop residue. If we get warm weather with high humidity late June to July, those conditions favors spore development which spread by wind and mois-

ture splashed onto the plant.

To battle against Fusarium, producers have access to a couple of tools. The

first would be to choose a variety that better tolerates the disease. There are a few varieties to choose from depending on what you are planting. The experts urge producers to determine the level of risk in there area and choose a variety from there.

Once a variety has been chosen and before the seed is planted producers should consider a seed treatment with a registered fungicide. Producers can easily pre-treat their seed themselves or have it done at their seed cleaning plant. Treated seed is exposed to less stress early in the growing season which gives it a better chance at success after emergence.

Lastly, in my opinion, the most important step a producer can take to combat disease is crop rotation. Rotation will reduce the amount of disease pathogen in the soil. When a producer has a long rotation they aren't just managing for Fusarium. Clubroot made its way to the M.D of Wainwright in 2017. One of 3 preventative measures is a 1 in 4 crop rotation which can reduce the spore level up to 70%.

For more information on seed treatment you can contact the Wainwright Seed Cleaning Plant and talk to Roger.

In 2017, the Alberta Wheat Commission collaborated with Alberta Climate Information Services (ACIS) and Alberta Agriculture and Forestry to develop a tool to help producers track Fusarium. The tool which can be viewed on your mobile phone was designed to determine the local disease severity risk. If you go to www.weatherdata.ca and click on the "Fusarium Disease Severity" link on the left side of the page it will navigate you to the tool. You are able to choose the weather station that is closest to you for the information. Once you click on the weather station it will give you the risk for Fusarium. The tool rates it on a low, medium, high and severe scale. It also gives your precipitation and humidity information. You are also able to look back on last years risk.

Barber, Jennifer (2018, January 8). Alberta Seed Guide: Planning for Fusarium in 2018. <http://seed.ab.ca/planning-fusarium-2018/>.



The Municipal District of Wainwright
together with
Alberta Onsite Wastewater Management Association and Land Stewardship Centre
Presents



Septic Sense:
Solutions for Rural Living

March 12th, 2018 at the Wainwright Communiplex Hall 1
6:00 p.m.

Understanding and taking care of your septic system

Did you know the average person puts 340 liters of sewage through a private sewage system (septic system) every day? For a family of four living in a two-bedroom house, that amounts to 1,360 liters per day and just under half a million liters per year!

Rural property owners are responsible for ensuring their systems operate properly and safely. If you have a septic system on your rural property, you will benefit from attending this workshop. Presenters will teach you how to understand, assess and properly manage your septic system, enabling you to protect your investment in your property and the valuable natural assets associated with your land.

Learn what you can do to properly manage and maintain your septic system. Attend the Septic Sense workshop hosted and presented by [INSERT YOUR ORGANIZATION], with technical expertise provided by the Alberta Onsite Wastewater Management Association (AOWMA) and materials developed by Land Stewardship Centre (LSC).

During the workshop we will cover:

- What a septic system is and how it works
- Regulations
- Design and installation
- Appropriate use of your septic system
- Maintaining your septic system
- Troubleshooting

To attend the workshop, please pre-register by calling Tanis Ponath at the M.D. of Wainwright Office at: 780-842-4454 or by emailing asb@mdwainwright.ca.

Brought to you by:

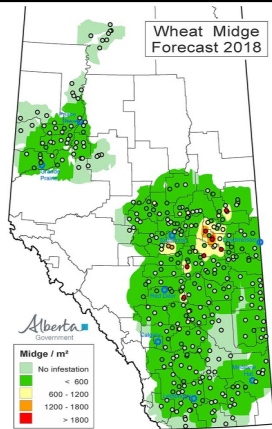


Alberta Onsite Wastewater
MANAGEMENT ASSOCIATION

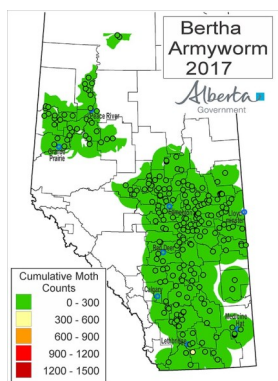


Land
Stewardship
Centre

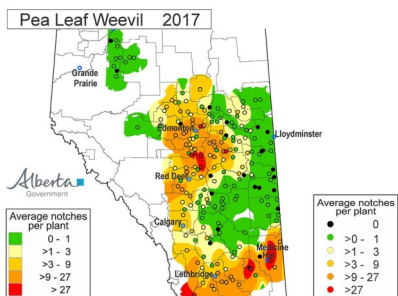
2018 Insect Forecasts



Compared to last year the wheat midge numbers in the M.D. were low in this years survey. Wheat midge was found in 4 out of the 7 fields that were surveyed. This does not pose a significant threat, however, this population base could be enough to increase numbers if next year is wet and late seeding takes place. It is important to remember that individual field populations can vary significantly so monitoring your fields is important. In addition to the soil samples 2 pheromone traps were deployed in July and there was a moderate number of midge caught. Traps are only intended for midge activity and not used for threshold determination.



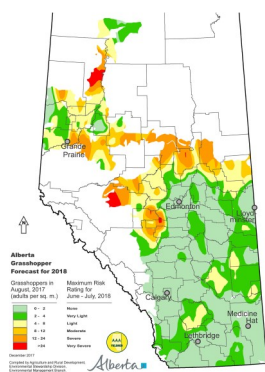
The bertha armyworm monitoring systems informs producers of the damaging populations with a 3 to 5 week lead time. All of the traps in the M.D. were below the first warning level of 300 moths. However, there are hints of increasing numbers and could be a possible build-up in the population. Bertha populations are normally kept in check by weather factors and natural enemies. Populations were low throughout the province in 2017 with no serious damage reported.



There were 5 fields surveyed for pea leaf weevil in the M.D. of Wainwright. Damage was low and the fields were surveyed in late May, early June. At this point we shouldn't need seed treatments for managing the pest in our area. The pea leaf weevil has been expanding its territory since 2012. Based on studies done on the pea leaf weevil, moisture in August looks to be a predictor of population increases the following year. Spring weather conditions also have an impact on the timing and severity of the weevils. If warm weather comes in April and persists for a few days, the weevils will arrive early in fields. If cooler weather persists longer and the weevils arrive later in the season when crop growth is passed the 6 node stage yield impacts have appeared to be lower.



Grasshoppers



In 2017 the grasshopper survey results indicated that high numbers of grasshoppers were primarily found in the Peace River region, north and west of Edmonton and the northern portion of central Alberta. The most common species found in these areas are *Melanoplus bruneri* or Brunner grasshopper. This species of grasshopper wasn't recognized as a pest until recently. This could potentially be an explanation for the outbreaks in alternate years that have resulted in very wrong forecasts for the past 10 years (Peace River region and north central Alberta). Alberta Agriculture is investigating the effect of their biennial life-cycles and its impact on grasshopper populations. The rest of the province showed low grasshopper populations.

The 2018 forecast map is based on adult grasshopper counts completed in early August. The counts give an indication of the number of grasshoppers that are capable of reproduction and egg laying. Environmental conditions can result in lower or higher populations depending on moisture.



Farmer Friendly Apps

Technology keeps advancing at an unimaginable pace and for some it is difficult to keep up with the times. I remember calving season with Dad and having to fill out the trusty “calving book” while we tagged calves. This small book was where all the important information was kept. Fast forward 10 or so years and all of this information can be stored on a small device called a smart phone. It can be a daunting task at first figuring out how to use some of the apps but they could be beneficial to your operation and save you time. Here are a few of the apps available.


- **iCalve** (icalve.com): This app is tailored towards cattle producers and is available for both android and apple users. With this app you can keep track of your calving records. Date of birth, birth weight, sex, I.D, death loss, culls, vaccinations etc. It also has a gestation calendar that will auto calculate due dates based on breeding dates. It can be purchased for \$9.99 in the play or iTunes store.
- **iLivestockMGR/iCattleMGRPro**: This app is available only for Apple users and can be purchased in the iTunes store for \$19.99. These apps can be used for cattle only or all livestock. These apps covers over 90 pieces of information about the health, well being, and status of your livestock inventory. Information can be backed up to the cloud or downloaded right onto your computer. These apps also have live chat support on their websites if you are experiencing problems with the app. Visit <http://www.icattlemgrpro.com/> and check it out.
- **iPastureMGR**: This app is for apple users only and can be used in conjunction with the above apps which are all made by the same company. It can be purchased for \$12.99 in the iTunes store. This app manages any information that is entered. You can manage your pastures by entering size, foliage, yield and animals grazing. This app is will estimate timeframe for rotations based on the information entered.
- **iAITankMGR**: This app can be purchased from the apple store for \$12.99. Records insemination inventory and applicable information.
- **Farm at Hand**: This is a free farm managing app that is only available for Apple users. This app allows you to track and schedule field activities from planting, seeding, spraying, scouting all the way to harvest. You can manage your equipment and keep maintenance logs on this app. For more information visit www.farmathand.com.
- **Pro Dairy Event**: This app is for dairy farmers and can be purchased at the iTunes and play store for \$15.99. This app allows dairy farmers to track records, milking times, alarm notifications, medication records etc.
- **CanFax CFX Pro**– This is a free app that tracks the cattle market for producers. This app can help with decision making when in the process of buying and selling cattle.

Last but not least there are a range of weed identification apps I encourage producers to download. If you have a foreign plant appear in a field, take a picture of the plant and the app will identify it for you. A few of the apps I use is ID Weeds, Weed ID and AgPhD: Field Guide. Of course if you have any problems or questions about it you can always call James or Tanis at the M.D. office and they will be glad to assist you.

There are so many options for producers, do your research and see which app is going to be the easiest for you to navigate and manage for your operation.

Clubroot Producer Meeting

The M.D. of Wainwright will be hosting a Clubroot Producer Meeting at the end of February, beginning of March. Please keep an eye out on our Facebook page and website as well as the Star newspaper for more information. If you have inquiries please contact the M.D. office at 780-842-4454 and ask for James or Tanis.



WETLANDS RESTORATION REVERSE AUCTION



The County of Vermilion River is introducing a new way to connect with landowners who want to restore wetlands and discover the true cost of restoration:

We'll have an AUCTION. But in REVERSE.

HERE's HOW IT WILL WORK

STEP 1: BID

CVR landowners will submit bids for what they feel is fair compensation to have a wetland restored on their land.

STEP 2: COMPARE

We will evaluate bids based on environmental benefits and cost.

STEP 3: SELECT

We will select those bids providing high environmental benefits at affordable cost.

STEP 4: RESTORE

Selected landowners will have their wetland restored and will be paid out of the County of Vermilion River Wetland Restoration Fund.

WHY RESTORE WETLANDS?

- ✓
Recharge groundwater
- ✓
Reduce floods & stabilize water flow
- ✓
Improve water quality
- ✓
Increase biodiversity
- ✓
Influence local weather
- ✓
Create natural irrigation
- ✓
Help manage salinity
- ✓
Provide water & feed for livestock

For more information, phone, text or email:
 Cathie at 780-808-6163
caychuk@county24.com or
 Chris at 780-853-7844
calder@county24.com.
 You can also check our website at www.vermilion-river.com.

