

April 2017

Volume 10, Issue 2

Have an interesting topic you want discussed in the Newsletter or municipal meeting? Send suggestions to Asst. Agricultural Fieldman Tanis Ponath, asb@mdwainwright.ca or 780-842-4454

Planting any trees this spring?? Make sure to call the M.D. to book the tree planter and plastic mulch applicator. ITS FREE!!

Ratepayers of the Municipal District of Wainwright are invited to attend an "Open House" at the M.D. Office in Wainwright on Tuesday, April 18th, 2017 from 4:00-6:00p.m. Council and Staff will be in attendance to informally discuss the affairs of the M.D. of Wainwright. Refreshments will be served.

Hope to see you there!



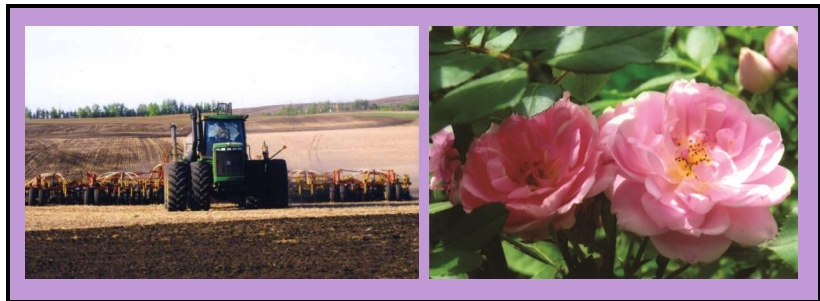
Municipal District of Wainwright No.61

The Municipal Agricultural Connection

Alberta Agriculture and Forestry



Partners in Rural Conservation
www.mdwainwright.ca



The 15th Annual Grazing School for Women Hosted By Lakeland College, Vermilion, AB

For the past 14 years, the Grazing School for Women has evolved into a fun way for Country Women (like yourself!) to get together to learn and discuss current ranching trends (environment, livestock, and beyond!) in the comfortable atmosphere of other rural ladies. This much anticipated event always has a different venue with a different speaker line-up. The 2016 GSFW was held at the Circle Square Ranch in Flagstaff County with farm tours in the neighbouring Beaver County. This year we are going to continue to showcase speakers that will inform, educate, and expand your knowledge about the livestock industry.

On behalf of the committee, I would like to extend an invitation for the.....

15th Annual Grazing School for Women, June 13-14th! Lakeland College, Vermilion, AB

For 2017 the Grazing School will again have a 2-day optional format. The choice is yours; you can pick the first day pasture tours, or the 2nd day classroom sessions with speakers, or both!! If you choose both days, there is a discount on registration fees, plus a whole lot more fun and excitement.

On the 13th there is a tour of Lakeland College. Our first stop will showcase the Livestock Research Facility and specifically look at the GrowSafe technology. A plant ID session will follow looking at range and riparian health assessments. Lastly, there will be a judging workshop presented by some of the industries best cattlemen.

On the 14th, the learning session will continue with livestock production insight such as:

- Outlining Important Benchmarks in your Operation—Diane Comeau (FFC)
- Producer Marketing Panel
- Emergency Livestock Plan
- AUM's and Pasture Health (continuation from day 1 tour)
- Forage Quality

Finalized agenda and map will be sent in a participant package. Registration before May 12th gets your name entered into an early bird draw. This year we have a \$200 visa gift card up for grabs.

Please find enclosed a brochure for the 2017 events and more details on registration information. Remember to register and mail cheques before May 12th to take advantage of our early bird prize (make cheques payable to The Grazing School for Women). The final registration deadline is May 26th, 2017.

A graphic for the Grazing School for Women. It features a silhouette of a cow and a calf in a field. The text "Save the Date" is in a large, elegant font, with "June 13-14, 2017" below it. The logo "The Original Grazing School for women" is also present, along with contact information for Linda Boyd.

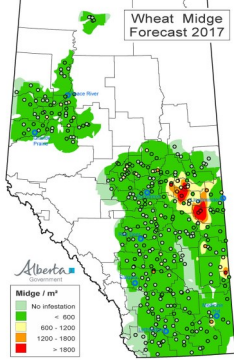
Save the Date
June 13-14, 2017

The Original
Grazing School
for women

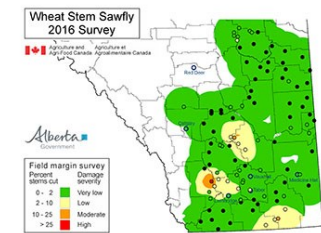
registration information
Linda Boyd
Assistant Agricultural Fieldman
County of Two Hills
Ph: 1-780-657-3358
Email: lboyd@thcounty.ab.ca

Hosted at
Lakeland College

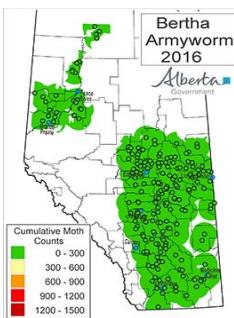
2017 Insect Forecast Maps



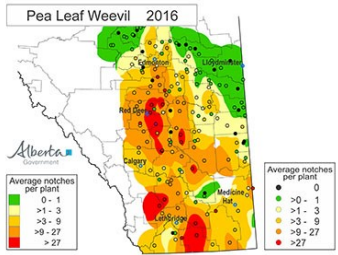
Although the wheat midge forecast for 2017 shows an overall lower levels there are some areas east of Edmonton with high number of wheat midge. Producers, especially ones in the high risk areas should pay attention to midge downgrading in their wheat samples and use this as a further indication of midge risk in their fields. Over the past several years the field to field variation has been considerable throughout the province, especially in those areas with higher counts. Individual fields throughout Alberta may still have economic levels of midge. Each producer needs to assess their risk based on indicators specific to their farm. The survey and map provide a general picture of the potential for an infestation in 2017. Weather conditions, specifically temperature and moisture will ultimately determine the extent and timing of midge emergence during the growing season .



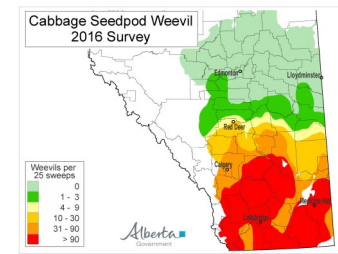
The areas that are most at risk of economically significant sawfly populations in 2017 will be in the Willow Creek/Lethbridge County border. The populations in Paintearth, Camrose and Flagstaff are on a decline due to parasitism and a fungal attack on overwintering larvae. Overall the sawfly risk remains low but there are still sufficient numbers to fuel wheat stem sawfly resurgence if dryer conditions occur for consecutive growing seasons.



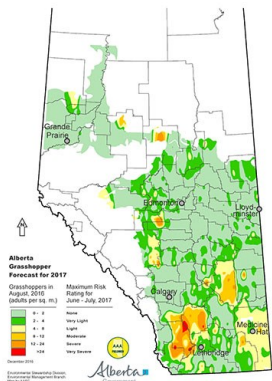
Bertha armyworms were monitored at 215 different locations across the province. The pheromone traps are used to determine the density and distribution of moths. The bertha armyworm population in Alberta is currently at a very low level with no serious populations or spraying reported in 2016. This is likely due to the impact of diseases and parasitism in the areas that previously had high populations. It will be critical to have a good coverage of traps in 2017 to develop an early warning systems if a resurgence is going to take place in 2017. Populations are normally kept in check by factors such as weather and natural enemies. Producers can view a live map on Ropin' the Web and see numbers as they come up. It is always important however, to be proactive and scout your fields.



Pea Leaf Weevil surveys are conducted in early June, since 2013 the range of the pea leaf weevil has expanded dramatically in central Alberta. The most severe damage was found NW of Lethbridge and along highway 2 from Calgary to N of Lacombe. There was very low feeding levels observed in east central Alberta. The damage is low and there is no risk of serious issues in 2017. However, producers should watch the development of these populations over the next few years.



In 2016 cabbage seedpod weevil was again found at economic levels in southern Alberta, and north into central Alberta. The pest is expanding its range into Camrose, Flagstaff and Wainwright. We are not at risk yet however, it is something to keep an eye out for. The earliest flowering canola crops tend to have the highest risk from cabbage seedpod weevil and should be monitored very closely. The weevil overwinters as adults therefore, the risk of infestation is further indicated by the adult population of the preceding fall. High number of weevil adults in fall will likely mean significant infestation levels in the following spring. This map does not adjust for the emergence of the new generation in the fall or overwintering conditions.



The risk of economically significant grasshopper populations in 2017 decreased in all areas of the province with the exception of southern Alberta. Areas indicated with moderate to severe risk could experience problems with grasshoppers if the environmental conditions are right. Light soils and south facing slopes have elevated risk of grasshopper infestations. Conditions late spring will determine the extent of the grasshopper problems later in the growing season. The 2017 grasshopper map is based on adult grasshopper counts conducted in early August 2016. The economic threshold for grasshoppers is 13+ grasshopper per meter squared in your field. Control may be required if number are between 7-12 grasshoppers per meter squared.

STRYCHNINE NOTICE

2017 FEDERAL REGISTRATION
OF
2% LIQUID STRYCHNINE CONCENTRATE
(LSC)
(PCP#304533)



**RICHARDSON'S GROUND SQUIRREL
CONTROL
AVAILABLE TO AGRICULTURAL
PRODUCERS**

Farmers with a Farm fuel # or farm license plates only. Product to be used only on land with economically significant Richardson Ground Squirrel populations.

Infestation levels must be:

1 RGS hole per four meters of walking, or if a producer has 20% damage in a 100m strip of crop or pasture land.

*Additional Conditions and Purchase Restrictions Also Apply
Cost of this product will be \$10.50/bottle or \$250.00/case*

AVAILABLE FOR PURCHASE

TUESDAYS BETWEEN 1:00-3:00PM Each Week
Starting April 4, 2017 until June 27, 2017. Purchases after these dates can be made by appointment.
All sales dependant on product availability.

LSC will be distributed from the M.D. of Wainwright Rec.Shop
(North side of the building)
2010-15 Avenue N.Wainwright
(Located between United Rentals and Wainalta Motors)

FOR MORE INFORMATION, PLEASE CONTACT
THE MUNICIPAL DISTRICT OF WAINWRIGHT AT (780)-842-4454



M.D. of Wainwright NO SPRAY & ROADSIDE HAYING AGREEMENTS

Deadline is May 1st !

If you are interested in participating in the 2017 program, please stop in at the M.D. office to fill out an application form. Forms are also available online at www.mdwainwright.ca. The roadside spray program will commence June 1st and roadside mowing will begin July 15th and will be completed by August 31st.



Moving Beyond Growing Forward 2

In recent years, Alberta's agricultural producers, processors and businesses have taken agriculture to the next level with some help from the Growing Forward 2 (GF2) program and funding. When it expires at the end of March, 2018, GF2 will have provided \$406 million investment in Alberta's agricultural sector and fostered more than 25 industry facing grant programs and seven internal initiatives supporting research and extension programs.

Agri-businesses have accessed GF2 grants to innovate, expand capacity and develop products. Other projects include adopting new farming methods to protect the land, using agriculture waste as a renewable energy source, putting new technology to use to enhance efficiency and safety in food processing operations and implementing practices and equipment that increase energy efficiencies and protect the environment.

GF2 has witnessed many successes over the years. April 1, 2018 marks the end of GF2 and the start of the Next Agricultural Policy Framework (NPF).

July, 2016 marked the annual federal-provincial-territorial Agricultural Minister's Conference where the Calgary Statement was endorsed. The Calgary Statement outlines what Canada's Agriculture Ministers believe are the priority areas for the NPF. The six key priority areas have been identified are: markets and trade; science, research and innovation; risk management; environment and sustainability and climate change; value-added agriculture and agri-food processing and public trust.

Consultations were held throughout 2016, and will help shape the direction of future policy and programs for the agriculture and agri-food sector. While the consultations are now closed you can check out the summary reports on the GF2 webpage.

The industry and stakeholders input provided what Alberta's agri-food businesses and producers want to see in the NPF and help guide Alberta's negotiations for the multi-lateral framework agreement planned for signature in July 2017 and the Canada—Alberta bilateral agreement which will be in place by April 2018.

To keep all opportunities for stakeholders to provide input into the NPF process in coming months, please visit the Growing Forward website at www.growingforward.alberta.ca and subscribe to the "Next Policy Framework News" page on the site. Subscribing will ensure you receive a personalized email when there are announcements about opportunities to provide input or new developments in the negotiation of the next agricultural policy framework.

Spring Clean-Up

Spring Clean Up Waste Disposal Coupon FOR RESIDENTIAL ONLY

This coupon entitles the holder to ONE FREE DUMP LOAD, up to a 3/4 ton truckload at the Wainwright Regional Landfill.

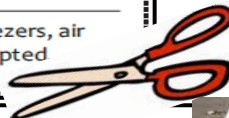
Valid Only May 15-20 and 23-27, 2017

Coupon must be presented upon arrival and has no cash value. M.D. of Wainwright residents only.

Name: _____

Address: _____

Proof of residency may be requested. Refrigerators, deep freezers, air conditioners, toxic and hazardous material will not be accepted. Please sort your wastes to facilitate disposal.



WAINWRIGHT REGIONAL LANDFILL

Regular Business Hours

Monday to Friday
8:00 a.m. to 5:00 p.m.

Saturday
8:00 a.m. to 4:00 p.m.



DISPOSAL

To facilitate disposal, wastes should be sorted into the following categories:

- Tires
- Burnables (lumber)
- Compostables (leaves etc.)
- Metals
- Clean Concrete
- Tree Branches

E-WASTE

You can dispose of the following electronics at no cost:

- Televisions
- Computers including monitor, keyboard, mouse, cables and speakers
- Printers and printer/scanner/fax combination

RECYCLABLES

Visit the Town of Wainwright Website @www.wainwright.ca/municipal/recycling or pick up a brochure at the Town Office.

For further Information contact the Wainwright Regional Waste to Energy Facility at 842-4051



The M.D. of Wainwright is once again providing a Spring Clean—up Initiative in your area. Details and locations below. For more information please contact M.D. main office, 780-842-4454.

Hamlet of Greenshields (Public Works to pick up)

Pick up days will be Monday and Thursday each week. Schedule of May 1,4,8,11-2017. Municipal employees will collect material properly packaged in clear plastic bags placed out in front of your house. Dark or coloured bags will not be picked up. Acceptable materials are grass clippings and tree trimmings.

Clear Lake Area & Hamlet of Fabyan (Bin Provided)

A garbage roll-off bin will be supplied, and placed at the Clear Lake main beach area and also at the East end of Fabyan, for one week period over the long weekend in May; from Wednesday, May 17 to Wednesday, May 24. This provides the opportunity to dispose of yard cleanup materials and household materials that are not hazardous.

Ascot Heights, Ascot Estates, Silver Willow and Banjo Estates (Bin Provided)

A garbage roll off bin will be supplied, and placed at the Ascot Heights garbage compound for a one week period over the long weekend in May; from Wednesday, May 17 to Wednesday, May 24. This provides the opportunity to dispose of yard cleanup materials and household materials that are not hazardous.

Unacceptable materials are appliances, furniture, construction materials, metal, hazardous waste, household and yard chemicals and paint. These materials can be taken to the Wainwright Waste-to-Energy Facility.