

May 2014

Municipal District of Wainwright No.61

Volume 8, Issue 3

# The Municipal Agricultural Connection

Have an interesting municipal topic you want discussed in the Newsletter? **Assistant Agricultural Fieldman Aimee Leggett, [asb@mdwainwright.ca](mailto:asb@mdwainwright.ca)**



**Partners in Rural Conservation**  
[www.mdwainwright.ca](http://www.mdwainwright.ca)



The 2014 Agricultural Service Board members, (back row L to R) Farm Member Neil Pugh, Pest Control Officer Rod Gabrielson, Councillor Bill Lawson, Farm Member Steve Rassok, Ag Fieldman James Schwindt, (front row L to R) Asst. Fieldman Aimee Leggett, ASB Chair Clr. Ted Wilkinson, and Farm Member Rod Thirsk.

## INCREASED FUSARIUM LEVELS SHOWING UP IN WAINWRIGHT AREA CEREAL SEED SAMPLES

Spring 2014 is shaping up to be optimistic conditions for seeding for grain farmers. With the snow cover gone and fields warming up, farmers are getting busy preparing for spring planting. Not only do fields and machinery need preparation for spring, but also does the seed that will be planted. Consider pre-treating your cereal seed with a fungicide.

unaware.” Lorne from the Edgerton Seed Plant says “If a sample comes back positive for Fusarium graminearum, that lot can not be unloaded or cleaned by the plant.”

Fusarium graminearum levels have been increasing in Wainwright and Edgerton area seed samples. Right now, local seed cleaning plants are seeing increased Fusarium graminearum positive detection tests. Roger from the Wainwright Seed Plant says, “This is something the local farmers need to be aware of (that Fusarium graminearum) positive tests are coming back, lots of guys are



### It's time!

### The recycling roundup is on!



Turn to the back page for info!

### MUNICIPAL MAGPIE TRAPS AVAILABLE FOR USE, 780-842-4024



## SEED TREATMENT PRIORITY FOR CEREALS

### WAINWRIGHT PROTECTION AGAINST SEED BORNE FUSARIUM

To battle against Fusarium, farmers should be treating their seed in the spring in a registered fungicide. Unfortunately many local farmers skip this important step, which is cause to worry in our municipality. Fusarium is not stoppable over a fence-line, and therefore if your neighbour is not treating their seed, Fusarium can infect your crop depending on weather conditions. Ask your neighbour, don't assume that they are. There are no in-crop sprays that will control Fusarium graminearum; starting with a pre-seed protection is a positive first step.

when farmers want a stronger vigour and even emergence in field. Consider trying a few field strips to see yield advantage. Call in to your seed cleaning plant to book bin space. Time intervals for treating are approximately 1000bu

Farmers can easily pre-treat their seed themselves; or they can get it done at their seed plant. The benefits of protection far out weight the minimal cost or inconvenience, especially since pre-treating also helps with other seedling pre-emergence problems from a cold spring



*Fusarium graminearum infected wheat seedlings, note the pinkish colour.*

**Don't just love the idea of gardening, get out there and embrace it and start digging into a project! A.L.**

# SPRING CLEAN UP!

## MUNICIPAL ROADSIDE MOWING PROGRAM and NO SPRAY

Clear Lake  
Fabyan  
Greenshields  
Ascot Heights  
Ascot Estates  
Silver Willow  
Banjo Estates

The M.D. of Wainwright Public Works Department will be picking up Spring Clean-Up materials for a 2 week period beginning May 15th to May 22nd, 2013. For more information please contact Karen at the M.D. main office, 780-842-4454.

### Hamlet of Greenshields

Pick up days will be Monday and Thursday each week. Schedule of May 5,8,12,15-2014. Municipal employees will collect material properly packaged in clear plastic bags placed out in front of your house. Dark or coloured bags will not be picked up. Acceptable materials are grass clippings and tree trimmings.

### Clear Lake Area & Hamlet of Fabyan

A garbage roll-off bin will be supplied, and placed at the Clear Lake main beach area and also at the East end of Fabyan, for one week period over the long weekend in May; from Wednesday, May 14 to Wednesday, May 21. This provides the opportunity to dispose of yard cleanup materials and household materials that are not hazardous.

### Ascot Heights, Ascot Estates, Silver Willow and Banjo Estates

A garbage roll off bin will be supplied, and placed at the Ascot Heights garbage compound for a one week period over the long weekend in May; from Wednesday, May 14 to Wednesday, May 21. This provides the opportunity to dispose of yard cleanup materials and household materials that are not hazardous. Unacceptable materials are appliances, furniture, construction materials, metal, hazardous waste, household and yard chemicals and paint. *These materials can be taken to the Wainwright Waste-to-Energy Facility; see back page.*



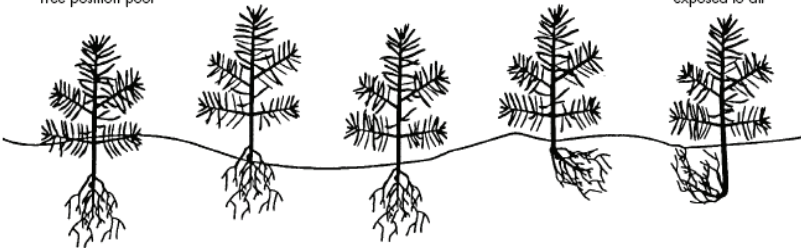
No Spray agreements must be submitted by May 1st, with roadside spray program commencing June 1st weather permitting. Roadside Mowing will begin after July 15th, and be completed by August 31st. Approximately 850 pre-selected miles will be receiving a minimum of a 10ft shoulder cut. Ensure that any roadside haying operations have begun before July 15th. Please contact James Schwindt, Agricultural Fieldman, 780-842-4454.

## 2% LIQUID STRYCHNINE CONCENTRATE AVAILABLE FOR 2014

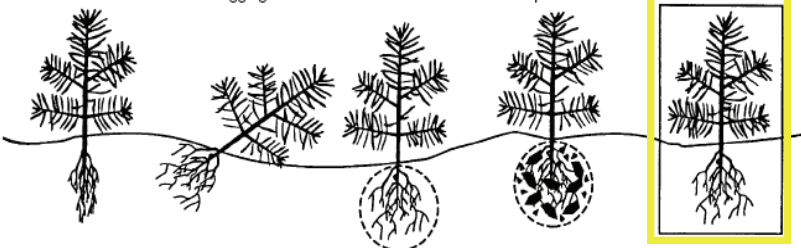
The M.D. of Wainwright will be selling 2% liquid strychnine concentrate for the 2014 season. This concentrate is for farmer's use only for the control of Richardson Ground Squirrels. Product will be sold Tuesdays, from 1:00p.m. to 3:00p.m., located at the municipal rec shop, 1 block west of Wainalta motors (until end of June, by appt. afterwards). Strychnine will be priced the same as last year, \$7.00 per bottle (1 bottle treats 2.2 lbs of grain). Farmers are required to fill out documentation for product use, maximum 2 case per purchase date to ensure safe handling and usage of this pesticide.

## PROPER TREE PLANTING TECHNIQUE

- 1. **Too deep**  
Needles buried  
Hole okay  
Tree position poor
- 2. **Too shallow**  
Roots exposed  
Hole too shallow
- 3. **Air pocket**  
From improper tamping
- 4. **"L" roots**  
Hole shallow
- 5. **"J" roots**  
Hole shallow  
Roots often exposed to air



- 6. **Compacted roots**  
Hole too narrow  
Not properly opened
- 7. **Not vertical**  
Shallow planting caused by improperly digging hole
- 8. **Too loose**  
Improper tamping after planting
- 9. **Poor planting soil**  
Planting in rotten wood, deep duff, or debris; roots not in damp mineral soil
- 10. **Satisfactorily planted tree**



**NEW Optional single day format for busy schedules!**

**WOMEN ONLY EVENT!**

**Bring your neighbour lady friends for a day outing to network!**

**Comfortable Learning Environment to be able to ask questions!**

**June 11 & 12, 2014**

**Lamont County**

**Day 1: Pasture Walk & Farm Tour, Steak Supper**

**Day 2: Beef Handling Code of Practice, Parasites on Pasture & Deworming (Roy Lewis DVM), COOL border movement & Global Beef Outlook with Current Cattle Beef Supply/ Pricing (Anne Wasko) and more!**

**Kelsey @ 780-384-4129 or kfenton@flagstaff.ab.ca**

Need to borrow the M.D.'s tree planter? Designed for small-size seedlings, planted into well cultivated soil. Call Aimee @780-842-4454, hundreds of seedlings can be planted quickly and easily for your treeline!

## Spring Clean Up Waste Disposal Coupon FOR RESIDENTIAL ONLY

This coupon entitles the holder to ONE FREE DUMP LOAD, up to a 3/4 ton truckload at the Wainwright Regional Waste to Energy Facility and Landfill Site.

**Valid Only May 12 -17 and 20-24, 2014**

Coupon must be presented upon arrival and has no cash value. M.D. of Wainwright residents only.

Name: \_\_\_\_\_

Address: \_\_\_\_\_

Proof of residency may be requested. Refrigerators, deep freezers, air conditioners, toxic and hazardous material will not be accepted. Please sort your wastes to facilitate disposal.

## 1201-4 Ave South Wainwright WAINWRIGHT REGIONAL WASTE TO ENERGY FACILITY

780-842-4051

Regular Business Hours

Monday to Friday  
8:00 a.m. to 5:00 p.m.

Saturday  
8:00 a.m. to 4:00 p.m.



**CUT THIS COUPON OUT AND  
USE IT!! M.D. OF WAINWRIGHT  
RURAL RESIDENTS!**

### DISPOSAL

To facilitate disposal, wastes should be sorted into the following categories:

- Tires
- Burnables (lumber)
- Compostables (leaves etc.)
- Metals
- Clean Concrete
- Tree Branches

### E-WASTE

You can dispose of the following electronics at no cost:

- Televisions
- Computers including monitor, keyboard, mouse, cables and speakers
- Printers and printer/scanner/fax combination

### RECYCLABLES

We now accept Glass, Metals & Plastics

For further information contact the Wainwright Regional Waste to Energy Facility at 842-4051

## SCOUTING FOR CUTWORMS

Scout the fields and inspect canola and pea seedlings on a weekly basis from mid-May to mid-June. Determine whether bare areas with no seedlings have resulted from poor germination, gophers or cutworm damage. Check the edges of bare areas for cut-off plants and search the top 5 cm (2") of soil around such plants for larvae. The key to control is detection. When notched, wilted, dead or cut-off plants (weed or crop seedlings) are seen, dig

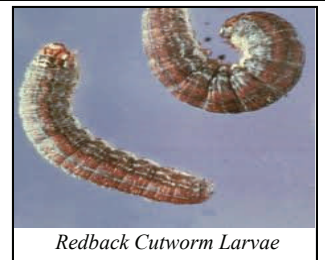


Redback Cutworm Pupae

around the roots of the plants for cutworms. To collect cutworm larvae, a garden trowel and a soil sifter are useful tools. The small, worm-like larvae curl up or attempt to hide in the debris. Because cutworm moths, like most moths, are nocturnal and attracted to light, the adult population can be monitored using light traps. Sex attractants also can be used to trap adult cutworm moths in commercial or homemade pheromone traps.

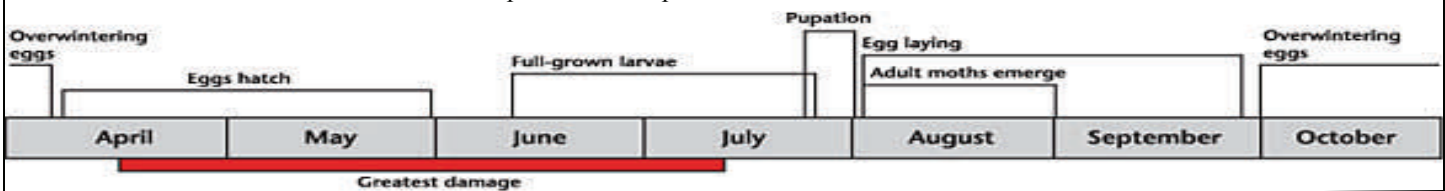
Cutworm control may only be necessary in small areas of the field, when bare patches appear and large numbers of cutworms are still actively feeding. Canola and peas are much more susceptible to cutworm damage than cereals because no regeneration and tillering occurs to compensate for loss of plants. Use an insecticide when cutworms exceed three to four cutworms per m<sup>2</sup> (yd<sup>2</sup>), or 25-30% crop reduction.

In the spring, a delay of 10 to 14 days between cultivation and seeding can help reduce populations of cutworms because larvae that have already



Redback Cutworm Larvae

fed will die if deprived of food for several days. Cold weather after cultivation and seeding will have a similar effect. Insecticides: Check provincial crop protection guides for registered insecticides. Apply insecticides in the evening since the worms and moths are more active during the night.



*Pull out your garden hose, and give your trees a much appreciated drink!*

# 2014 MUNICIPAL BERTHA, DIAMONDBACK & SWEDE MIDGE COUNTING



Bertha Army Worm Moth & Trap

The Bertha Army worm “green bucket” traps are set on 2 canola field sites (one near Irma, the other near Edgerton), starting June. Each week, contents of adult moths are counted, and submitted to Alberta Agriculture which can be viewed online [ropingtheweb.ca](http://ropingtheweb.ca). Counts of the adult moths are cumulative, which predict if there will be a heavy pressure of larvae/ caterpillars yet to come. The past few seasons, local area farmers have also seen a beneficial fungus attacking the larvae, causing the larva to disintegrate and vaporise right on the canola plant, eliminating the need for insecticide spray.



Diamondback Moth & Trap

The Diamondback moth “white triangle tent” trap will be set up the last week of April, with a single site near Irma. In conjunction with Alberta Agriculture monitoring trajectory winds from the southern states and Province, count numbers are accumulated and submitted online to form a map of potential pressure. In previous years, the Diamondback moth does not seem to be posing threats in the Wainwright area; however it should be a consideration for farmers to keep in mind what “the winds” may be bringing in for field pests.



Swede Midge Larvae on a canola flower

affects the canola blossom, causing flowers with petals apparently fused or glued together, and misshapen, stunted or sometimes missing pods. Based on the experience in Ontario, where the pest was first found in the year 2000, damage symptoms depend

The Swede Midge Larvae may be a new pest to Wainwright area farmers, but it is one that this year Alberta Agriculture is requesting to be monitored as more damage is being noted in NE Saskatchewan.

Swede Midge Larvae



Swede Midge Larvae on penny

on the growth stage of canola when feeding occurs, and the intensity of feeding. If larvae attack pre-bolting canola, the growing point may become necrotic and bolting might not occur. Damage to a bolting stem may cause a “palm tree” effect, with a shortened raceme crowned with a bouquet of pods radiating out from one point rather than along a typical raceme. After full flowering Swede Midge does not impact canola yields. In northeast SK last year the racemes appeared normal except that some flowers had fused petals that did not open, suggesting a later infestation that should limit any impact on yield. When dissected, the flowers contained small larvae. The M.D. of Wainwright will continue being on watch for possible encroaching field pests.

Bring your old computers, TVs and paint to:

The Hazardous Round-up at  
Wainwright Regional  
Waste to Energy

1201 - 4 Avenue South

Saturday

May 10 10 a.m.- 2 p.m.

For more information  
contact 780-842-4051

CUSTOMER  
APPRECIATION  
FREE BBQ  
LUNCH  
Provided by  
GM Pearson

BBQ



Visit [www.albertarecycling.ca](http://www.albertarecycling.ca) or call 1.888.999.8762 for more information on electronics and paint recycling in your area.



LET'S PROTECT OUR LANDFILL  
SPACE AND KEEP OUR COMMUNITY  
TOXIC FREE